



Cross Stitch in:

⋮	Lemon med-	DMC
■	Black	Gold Blending Filament
×	Topaz + Black	310
▽	Pewter Grey dk	Gold Filament / 310
<	Pewter Grey dk + Pewter Grey vy dk	413
×	Pewter Grey vy dk	413 + 3799
⋈	Pewter Grey vy dk + Black	3799
		3799 + 310

Back Stitch in:

=====	Lemon med	Gold Blending Filament
=====	Black	310
=====	Topaz + Black	Gold Filament / 310
=====	Pewter Grey dk + Pewter Grey vy dk	413 + 3799
=====	Topaz + Pearl Grey	Gold Blending Filament + 415
=====	Pewter Grey vy dk	3799
=====	Pewter Grey vy dk + Black	3799 + 310

The blending filament used is Gold 7 in the Madeira Glissengloss range.

Additional Information

When sorting the DMC threads please note that the DMC colours used in this design are as follows:-

310 --- Black

3799----Dark Grey

414-----Medium Grey

415-----Light Grey

Cinderella –Midnight Stitching Notes

Approximate Design Size 19 ins x 12 ins (48cms x 31cms)

This design can be stitched on 14 count aida or 27/28 count evenweave over 2 x 2 threads and is stitched in Blackwork (worked in back stitch or stab- stitch) and cross-stitch .

The 4 small arrows, one appearing at the edge of the chart, are to enable you to centre the design on your fabric. Please note that to make moving from 1 page of the chart to another easier there is a **2 line shaded overlap** from page 2 onwards, where the adjoining 2 lines from the previous page are duplicated

General

In the Blackwork part of the design the thicker lines, usually outlines are stitched in 2 strands of the appropriate colour, the thinner lines e.g. the infill patterns are stitched in 1 strand. Please note that the flounce on the lady's petticoat on the far left of the pictures in 1 strand of DMC 310.

Where darker lines appear over the infill pattern these should be put in after the underlying infill pattern is completed.

Cross-stitches are in 2 strands of the thread shown in the key. Where shades are blended, please use 1 strand of each colour specified.

Where a half-stitch is used, a diagonal line is shown across the square with the appropriate symbol behind it.

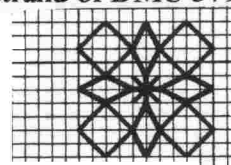
Where a shade other than Black is used in the Blackwork part of this design, instructions for each section are given below

Gentleman in the Middle

The backstitch around his coat buttons is in 2 strands of gold blending filament. There are backstitch lines on his left coat cuff below the gold cross-stitches and these also should be stitched in 2 strands of blending filament

Lady in the Middle

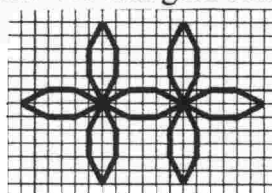
Her skirt is outlined in 2 strands of DMC 310 but the infill pattern is in 1 strand of DMC 3799.



Cinderella

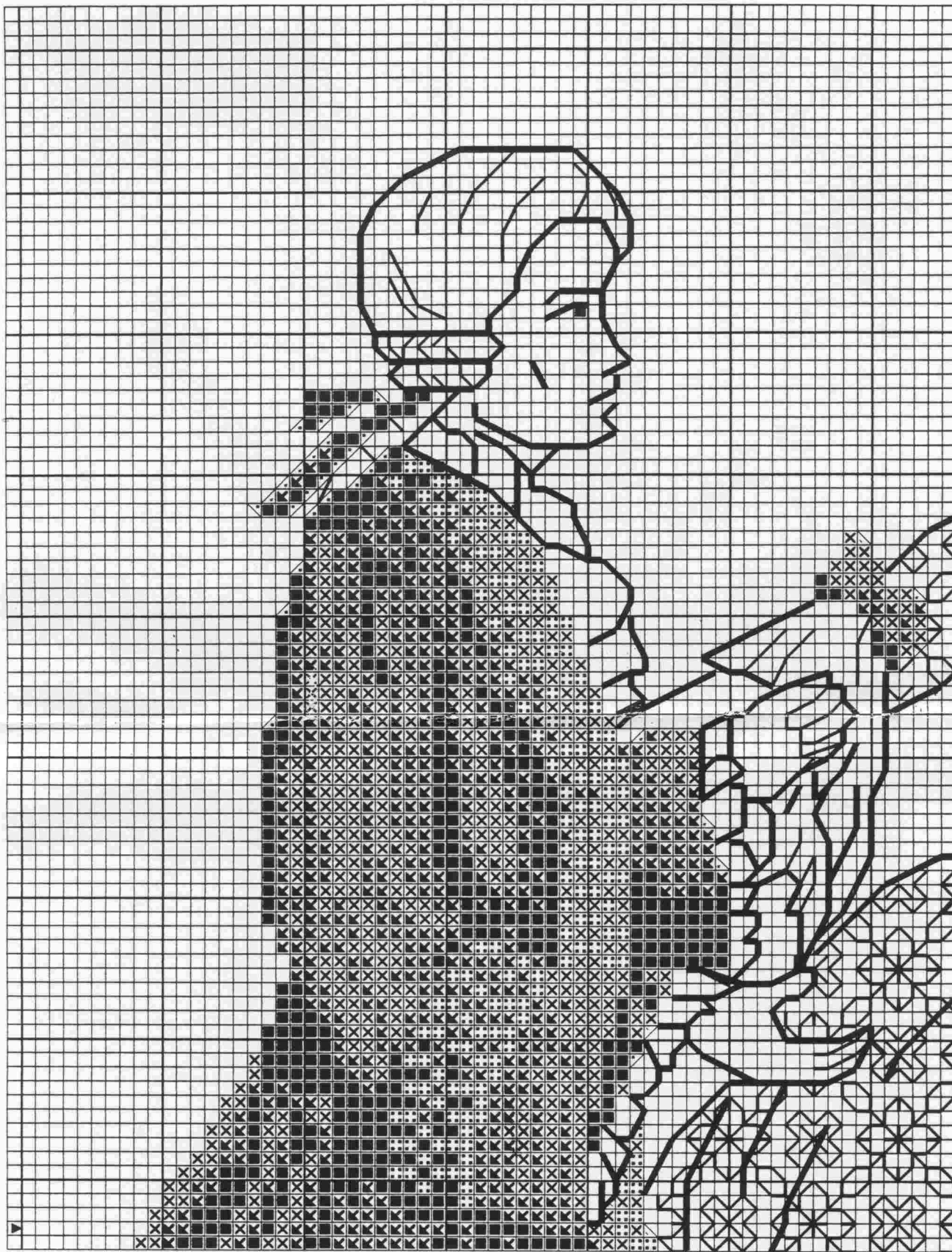
Her bodice and flounced overskirt are outlined in 2 strands of DMC 310 as are the flounce outlines of the top skirt which is stitched in cross-stitch.

Her underskirt is outlined in 2 strands of DMC 415 and gold blending filament and the infill pattern and fold marks over it are stitched in the same.



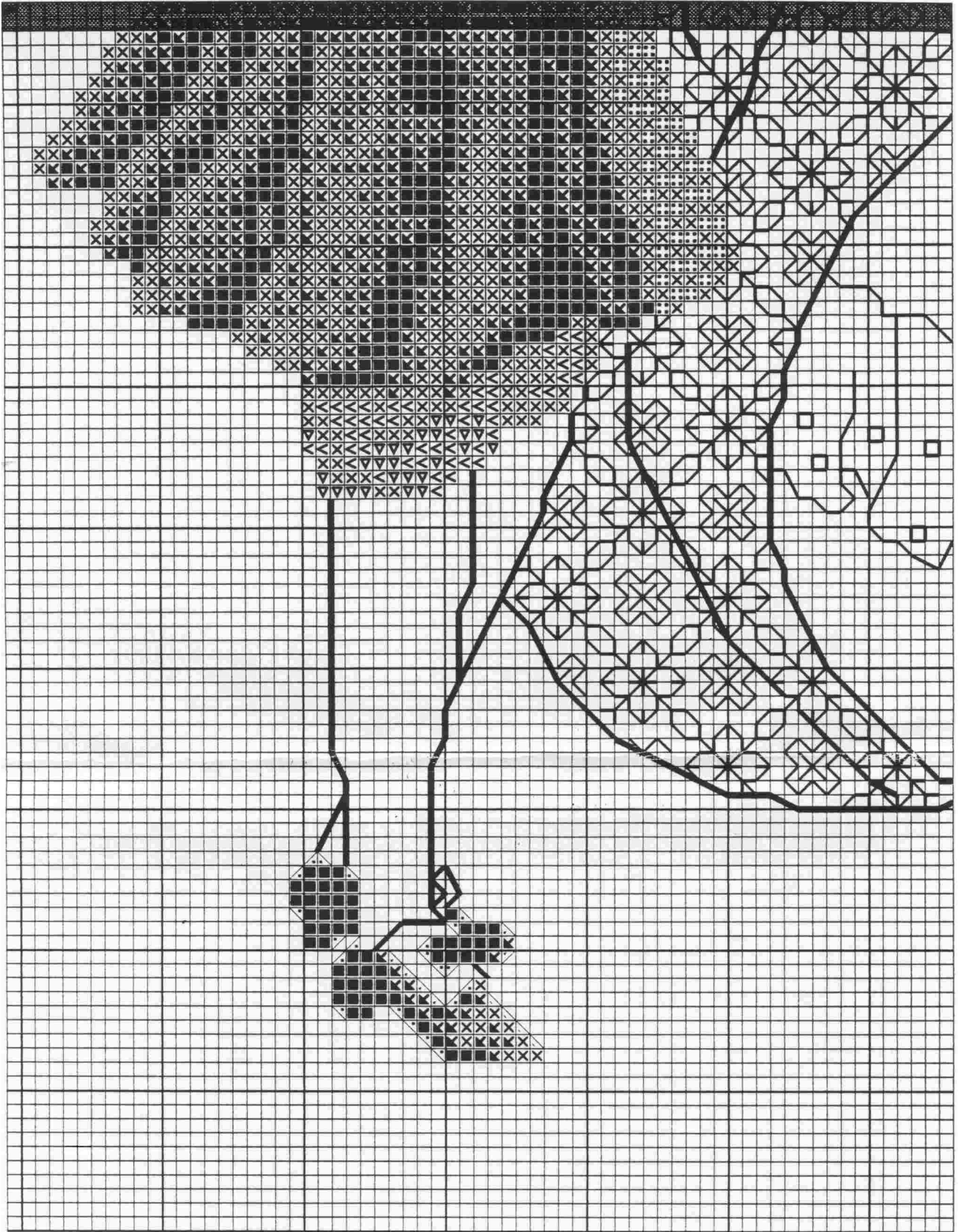
Copyright Notice

All printed matter in this pack is the copyright of Catkin Embroidery Designs 2002 and may not be copied by any means or stored in any retrieval system without the express written permission of the publisher.



 **Catkin Embroidery Designs**
Cinderella-Midnight[®]





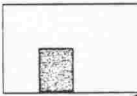
Catkin Embroidery Designs
Cinderella-Midnight®





Catkin Embroidery Designs
Cinderella-Midnight®





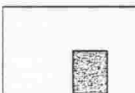
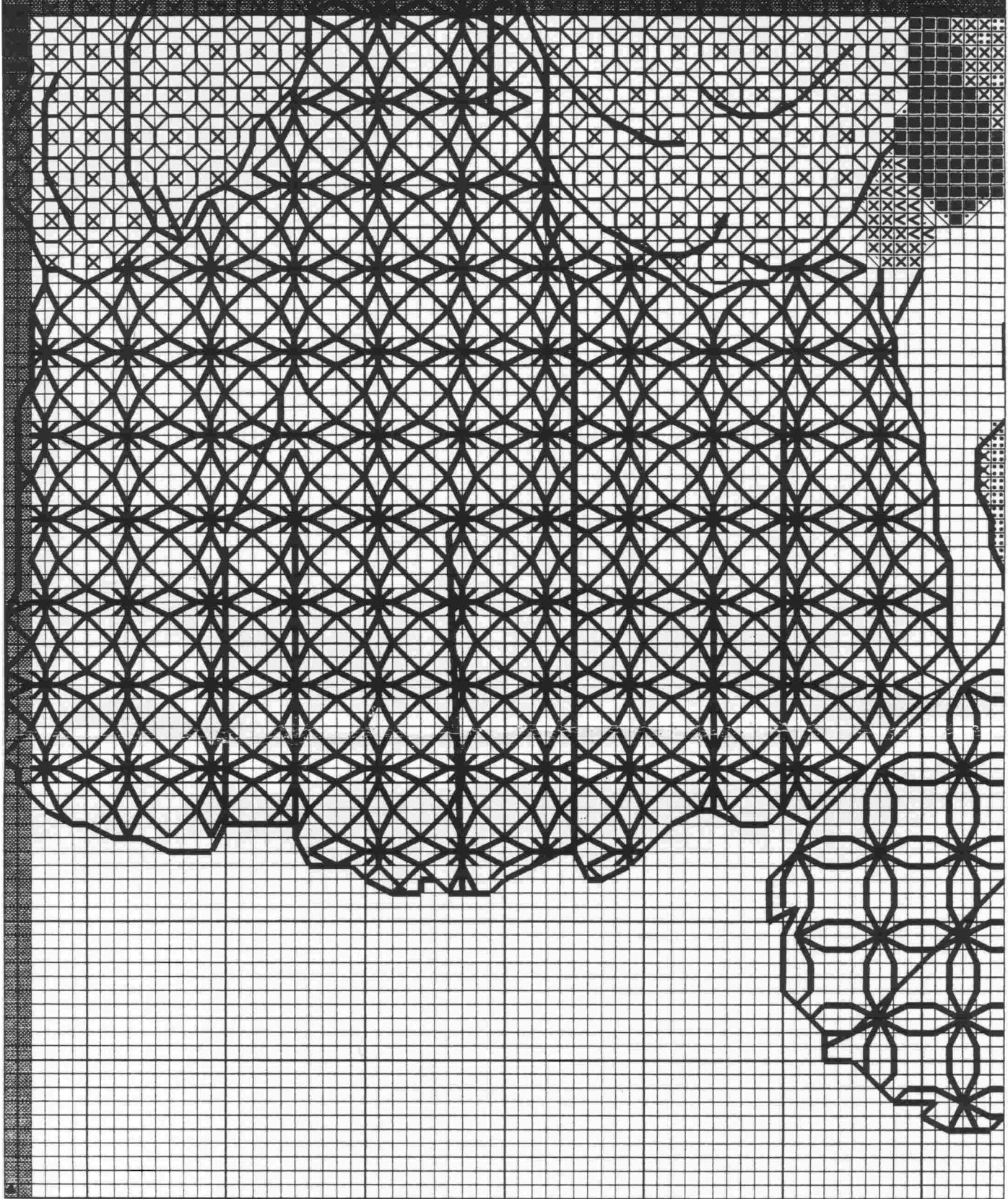
Catkin Embroidery Designs
Cinderella-Midnight.





Catkin Embroidery Designs
Cinderella-Midnight[®]





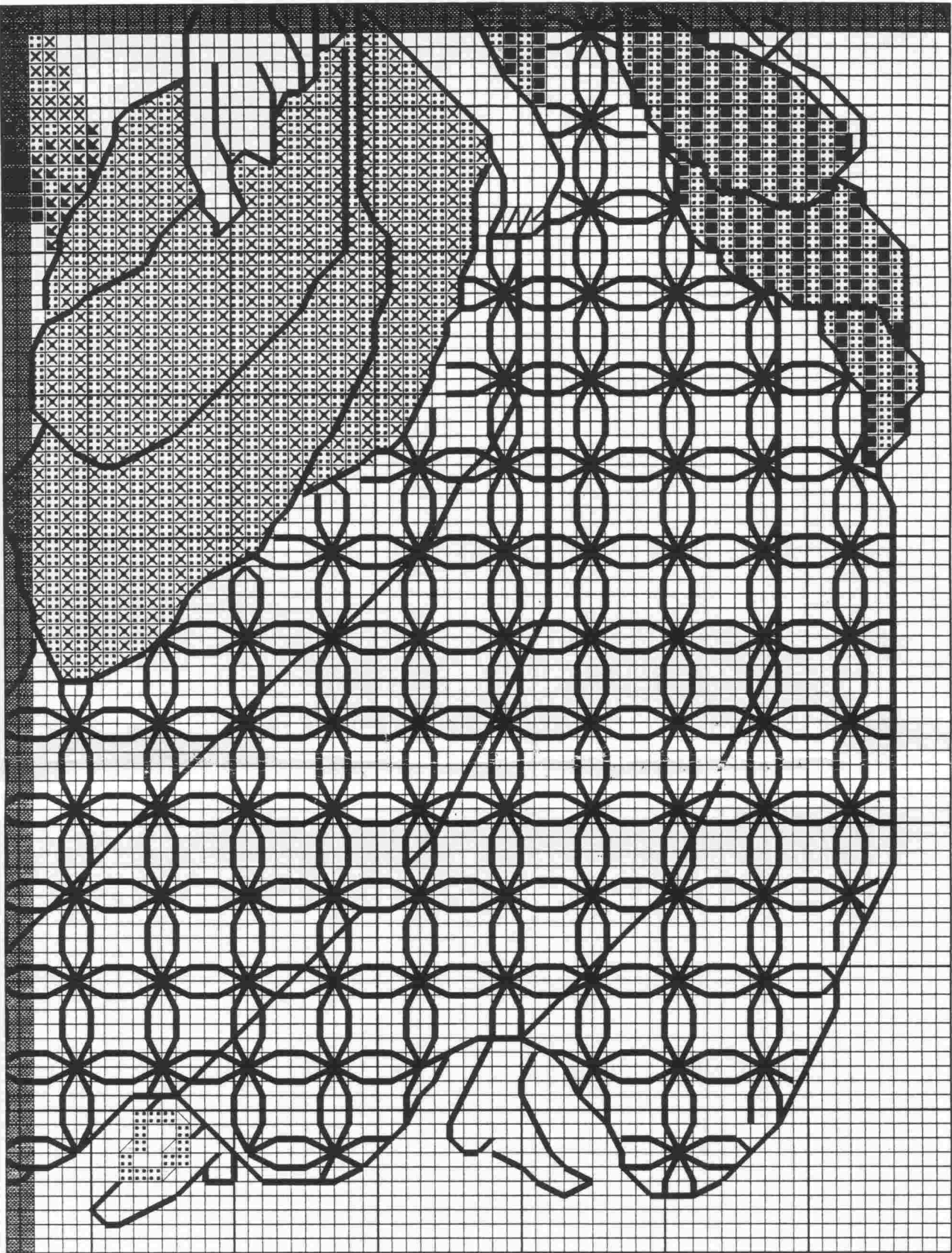
Catkin Embroidery Designs
Cinderella-Midnight®





Catkin Embroidery Designs
Cinderella-Midnight®





 **Catkin Embroidery Designs**
Cinderella-Midnight[®]

