

Jocelyn

This Blackwork Design can be stitched on 14 count Aida
or 27/28 count Evenweave



Approximate Design Size 12.5'' x 19.5'' (32cm x 49.5cm)







Published by Catkin Embroidery Designs
31 Cleeve Road, Knowle, Bristol, BS4 2JR

Tel: (0117) 971 5802 Fax: (0117) 914 7160







DMC

Cross Stitch in:

	Topaz lt	Gold 7
	Black	310
	Steel Grey dk	414
	Steel Grey dk	414 (S)
	Pearl Grey	415
	Pewter Grey vy dk	3799

Back Stitch in:

	Black	310
	Steel Grey dk	414
	Steel Grey dk	414
	Pewter Grey vy dk	3799

Blending Filament

The blending filament used is **Gold 7** in the Madeira Glissengloss range, but alternative gold thread can be used. Please use 2 strands of this thread in the design for cross- stitches and backstitch in this colour.

Jocelyn Stitching Notes

Approximate design size 12.5" x 19.5" (32cm x 49.5cm) on White

This design can be stitched on 14 count or on 27/28 count Evenweave over 2 x 2 threads and is mainly comprised of Blackwork (worked in backstitch or stab stitch) although the border and part of the main design are worked in cross-stitch. Cross-stitches are worked in 2 strands of thread **except** for the symbol for **DMC 414(S)** where a single strand is used. The 4 small arrows, one appearing at the edge of the side of each of 4 pages of the chart are to enable you to centre the design on your fabric. Please note that to make moving from 1 page to another easier there is a **2 line shaded overlap** on most pages where the adjoining 2 lines from the previous page are duplicated.

Blackwork

In this part of the design the thicker black lines, usually outlines, are stitched in 2 strands of the colour specified, while the thinner lines e. g. the infill patterns are stitched in 1 strand. Where darker lines appear over the infill pattern i.e. on the lady's gown and on the cushion these should be put in after the underlying infill pattern is completed. More than 1 shade is used in the blackwork part of this design so instructions for each section are given below.

The Lady The outline, including face and features are stitched in 2 strands of DMC 310. The infill pattern of the gown is in 1 strand of DMC 3799 while the folds of the dress, the belt outline and the headress wires are in 2 strands of DMC 310. Her veil is in 1 strand of DMC 310.

Where backstitch lines, shown as a thick black line, appear on the fur borders of the gown, these should be stitched in 2 strands of DMC 310.

Her **necklace** shown as a series of thick black lines should be stitched in 2 strands of the Gold blending filament. The thin black lines below the necklace and above the fur collar, being the top of the top of the underdress should be stitched in 1 strand of DMC 310.

Wooden Seat This is stitched in DMC 3799 throughout. The **cushion** however on the seat is outlined in 2 strands of DMC 414 with an infill pattern in 1 strand of the same

The Window is also stitched in DMC 3799 (please note the differing thickness of the lines showing differing thread amounts.) but the infill pattern at the top is stitched in 1 strand of DMC 414 and the brickwork surrounding the window is in 1 strand of DMC 414.

The Cross-stitch Border is stitched in 2 strands of the colour and thread type shown in the key above. The vertical line separating the border from the main design is in 2 strands of DMC 3799 and the stems of the gold berries shown in a thick black line should be stitched in 2 strands of DMC 310.

Copyright Notice

All printed matter in this pack is the copyright of Catkin Embroidery Designs 1999 and may not be copied by any means or stored in any retrieval system without the express written permission of the publisher.



Catkin Embroidery Designs Blackwork Instructions

General

In order to maintain an even tension it is advisable to use an embroidery frame or hoop. If you are leaving your work for some time, remember to release the fabric from the frame to prevent it being marked. In Blackwork it is essential to avoid carrying threads a long distance across the back of the fabric as it shows through the completed work.

Getting Started

Bind, tape or zig-zag raw edges of material to prevent fraying. Fold the material into four, horizontally and vertically and pinch centre to mark design-starting point. Sort and identify threads, daylight is best for this. The six stranded thread can be separated into 1 or 2 strands as required. It is inadvisable to use lengths of more than 20 inches.

Start working your design from the middle so that it is centred on your material. Do not start with a knot. Blackwork consists of an outline usually in 2 strands, with an infill pattern that is usually in 1 strand. This is only a general rule and specific instructions for this design can be found in the design notes. It is a matter of personal preference whether the outline or the infill pattern is stitched first. For those who prefer to stitch the outline first it will be necessary to find the centre of the fabric and count squares (Aida) or threads (Evenweave) outwards to reach a starting point.

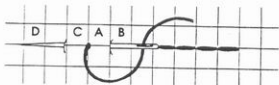
Please remember to weave loose threads into the back of the finished work to prevent them showing through the design when framed. Since Blackwork has so many areas of blank fabric incorporated into the design there is more danger of this happening than in any other embroidery techniques.

Stitches

Note that the stitches below are illustrated on 14 count Aida, where the squares can be easily seen on the fabric. In the case of 28 count Evenweave or Jobelan remember to stitch over 2×2 threads.

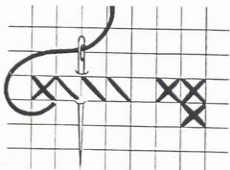
Back stitch

Represented by lines on the chart and can be stitched horizontally, vertically or diagonally. Bring needle up at A, down at B, up at C, down at A and up at D. Continue until outline is completed.



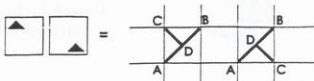
Cross stitch

The colour used is indicated by the symbol in the square which can be identified from the Chart Key. The direction these are worked in is not important PROVIDED all the top stitches are worked in the same direction i.e. left to right or right to left.



1/2 Cross-stitches

If the symbol is in the corner of the square with a diagonal line across the square, it indicates a half stitch. Bring the needle up at corner **A** and then diagonally down at the opposite corner **B**. Next bring the needle up at **C** and down at **D** in the centre of the square.



Beads

Where a design uses beads, these are attached by a diagonal stitch through the bead in a single strand of toning cotton, using a beading needle or crewel No. 8.

Special Aftercare Instructions

Natural oils from the skin may discolour the fabric after a time under glass. It is recommended that the work be gently hand washed in luke- warm water, using a mild detergent(non- biological and bleach free) rinsed well before excess water is squeezed out onto a towel

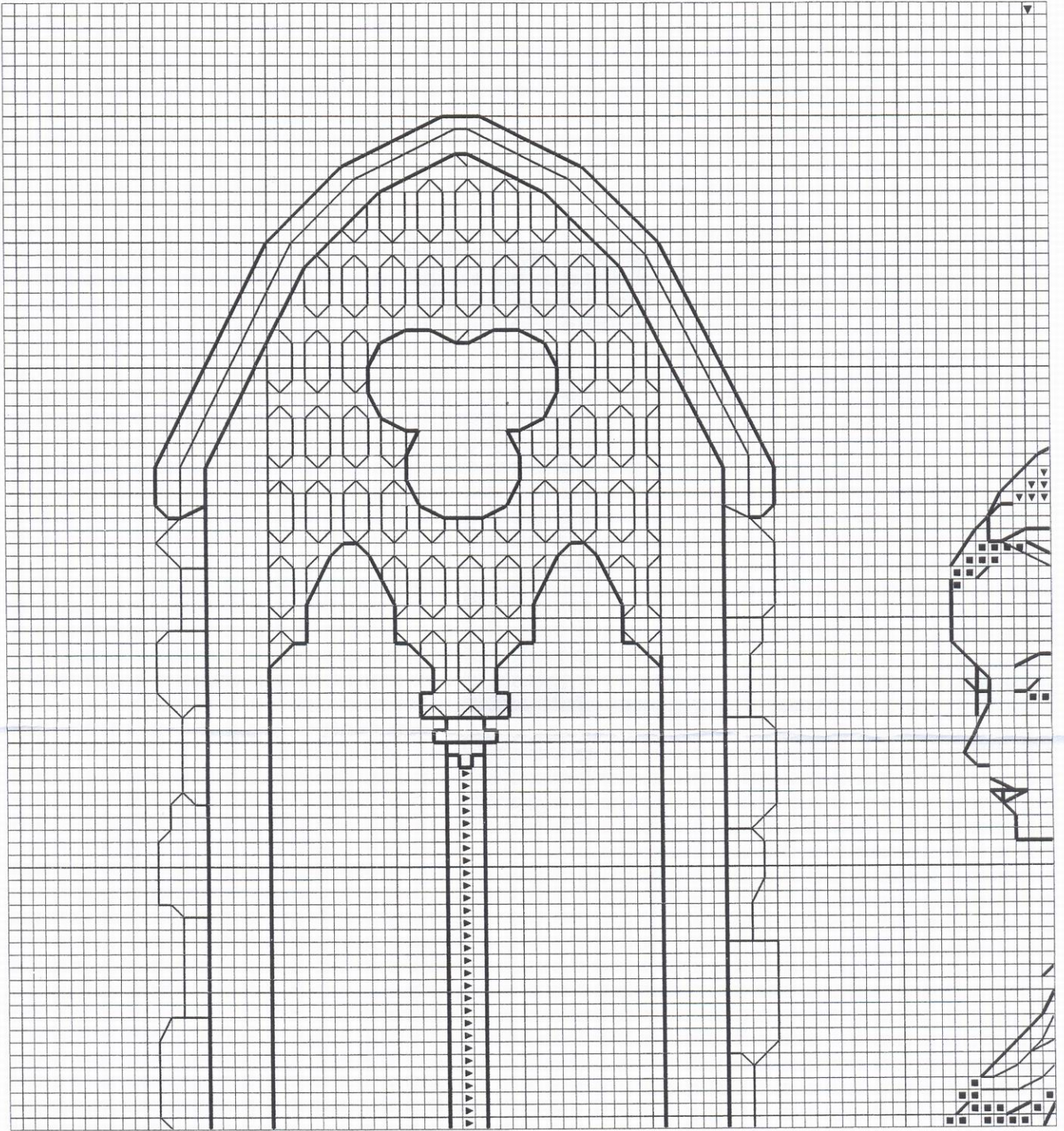
Whilst damp, iron face down on a thick towel. This prevents the stitching being flattened. Metallic threads and beads should have work covered with a cloth before being ironed face down.

We hope you enjoy working this design. A catalogue of other designs is available from the address below.



Catkin Designs

31 Cleeve Road,
Knowle,
BRISTOL BS4 2JR.

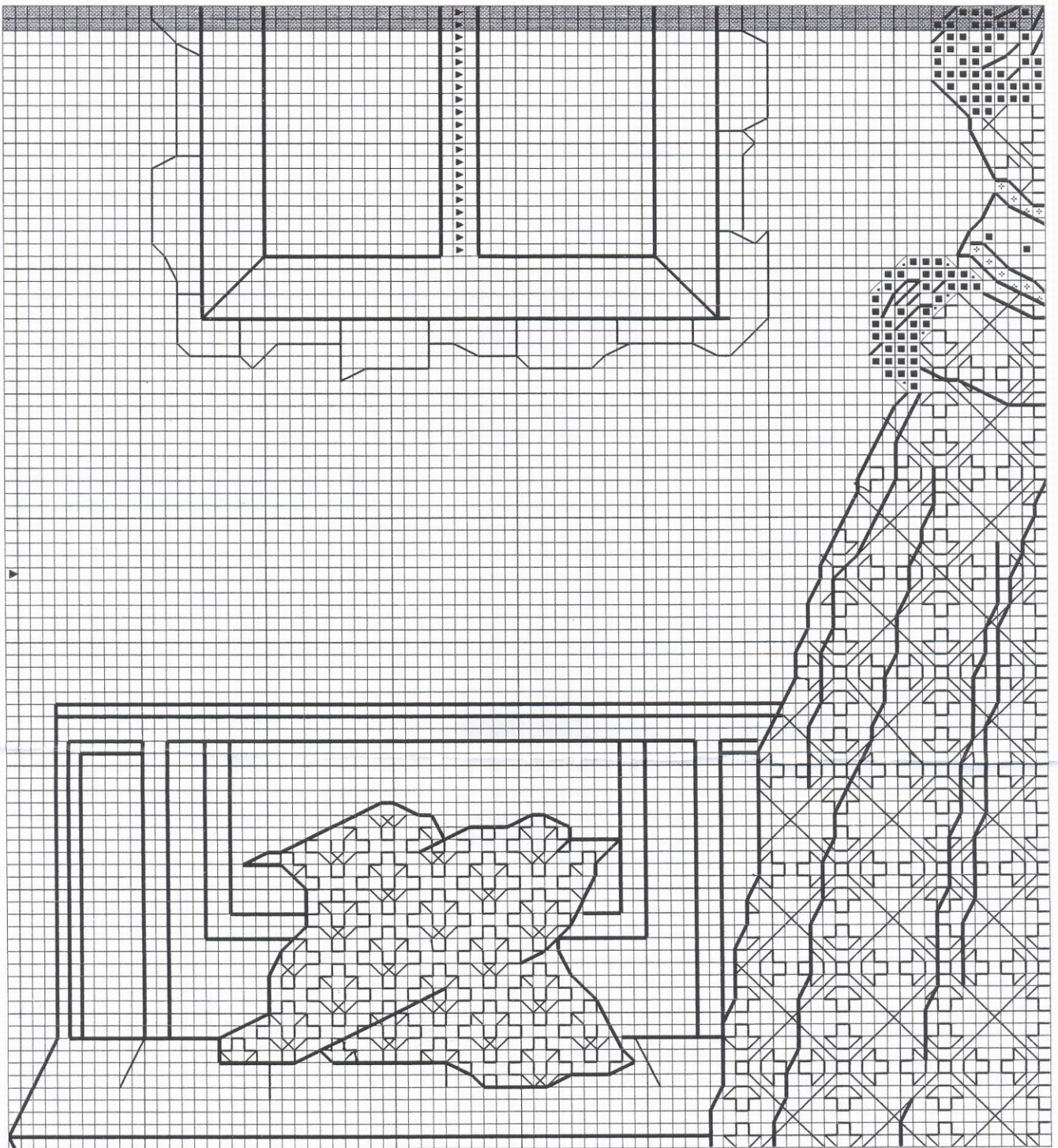


Catkin Embroidery Designs

Copyright

Jocelyn ©





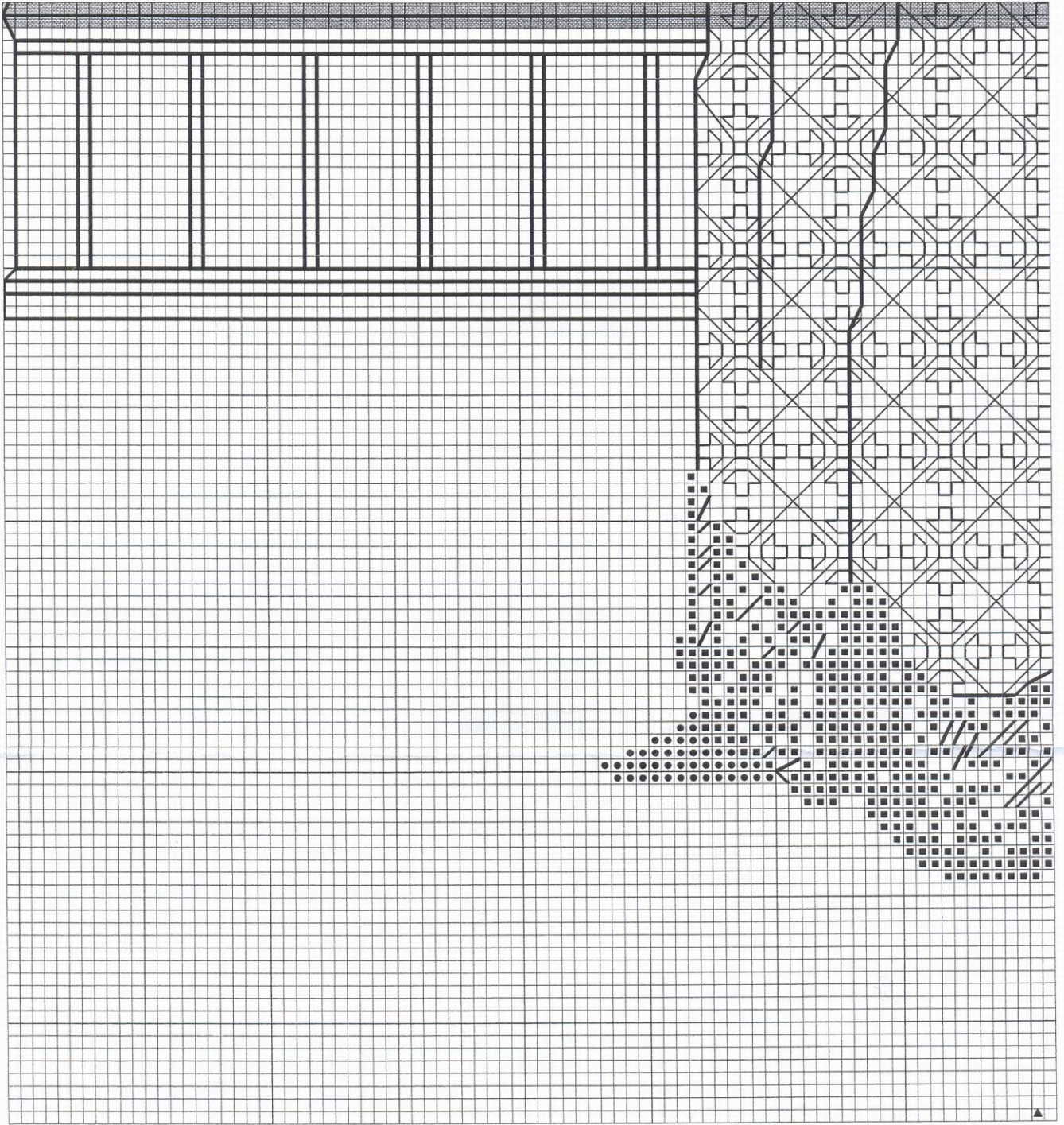
Catkin Embroidery Designs

Copyright

Jocelyn ©



Please note that there is a **TWO** row overlap at the top of this page

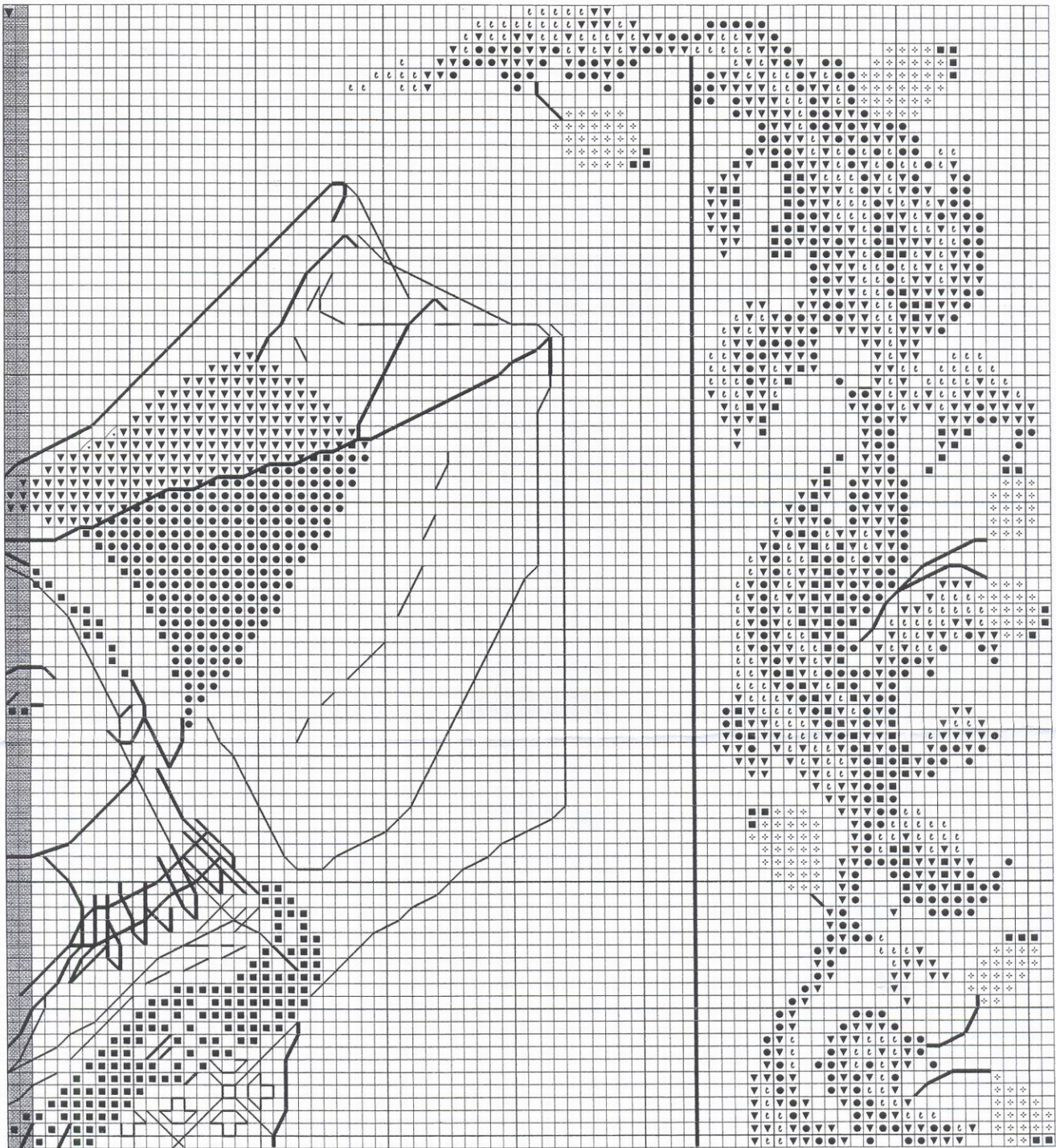


Catkin Embroidery Designs

Copyright

Jocelyn ©



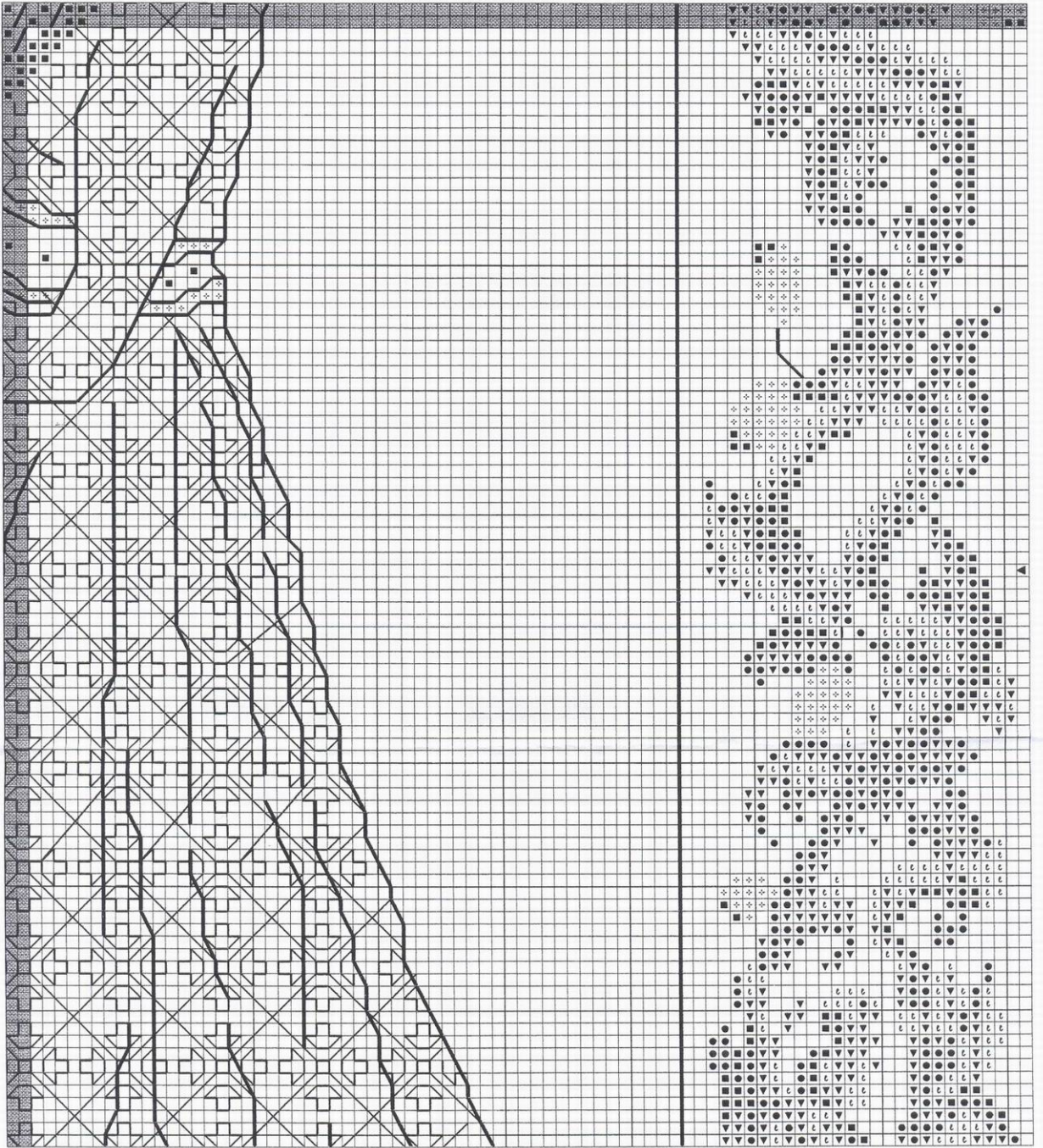


Catkin Embroidery Designs

Copyright

Jocelyn ©



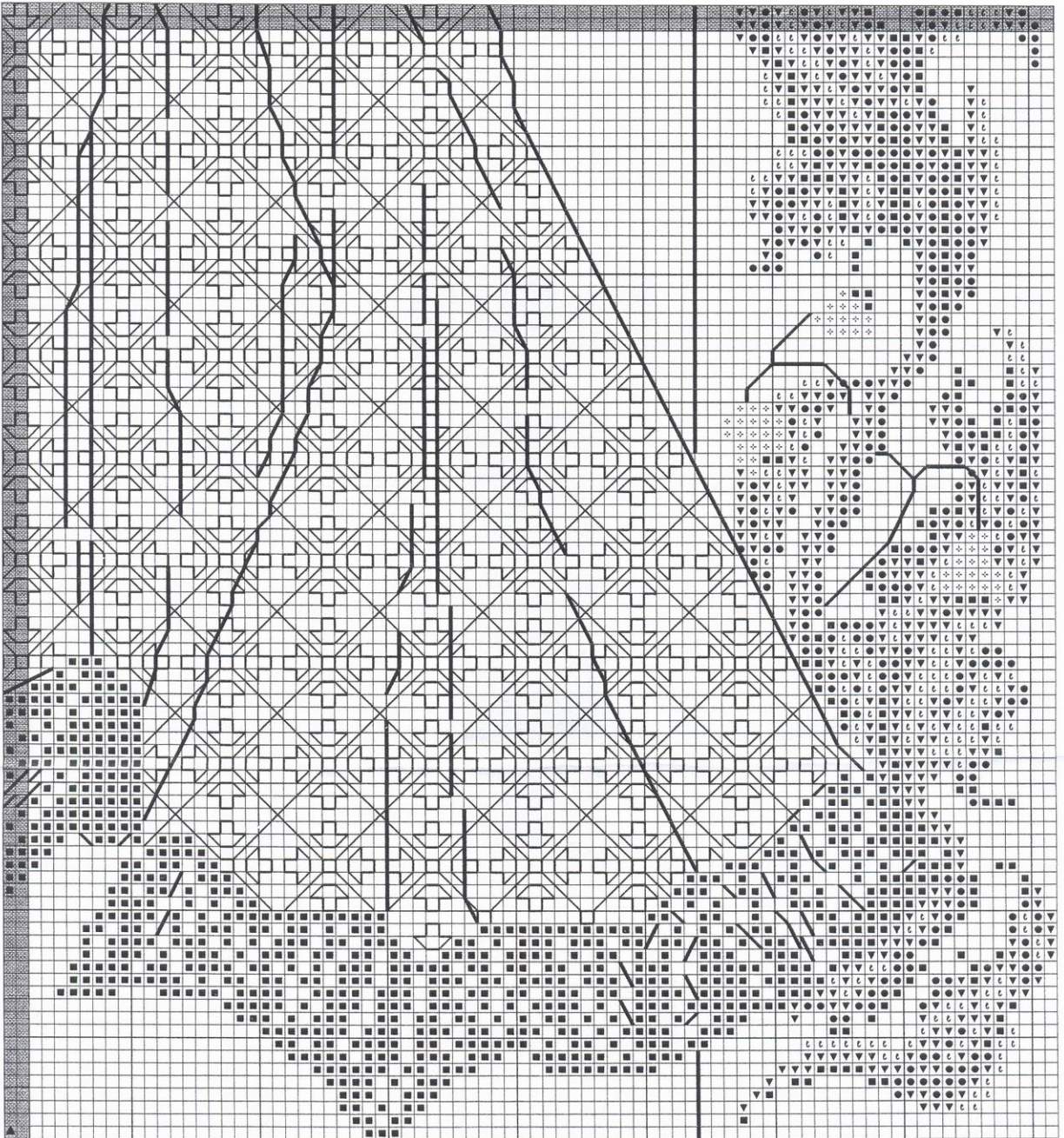


Catkin Embroidery Designs

Copyright

Jocelyn ©





Catkin Embroidery Designs

Copyright

Jocelyn ©



Please note that there is a **TWO** row overlap at the top and left hand side of this page